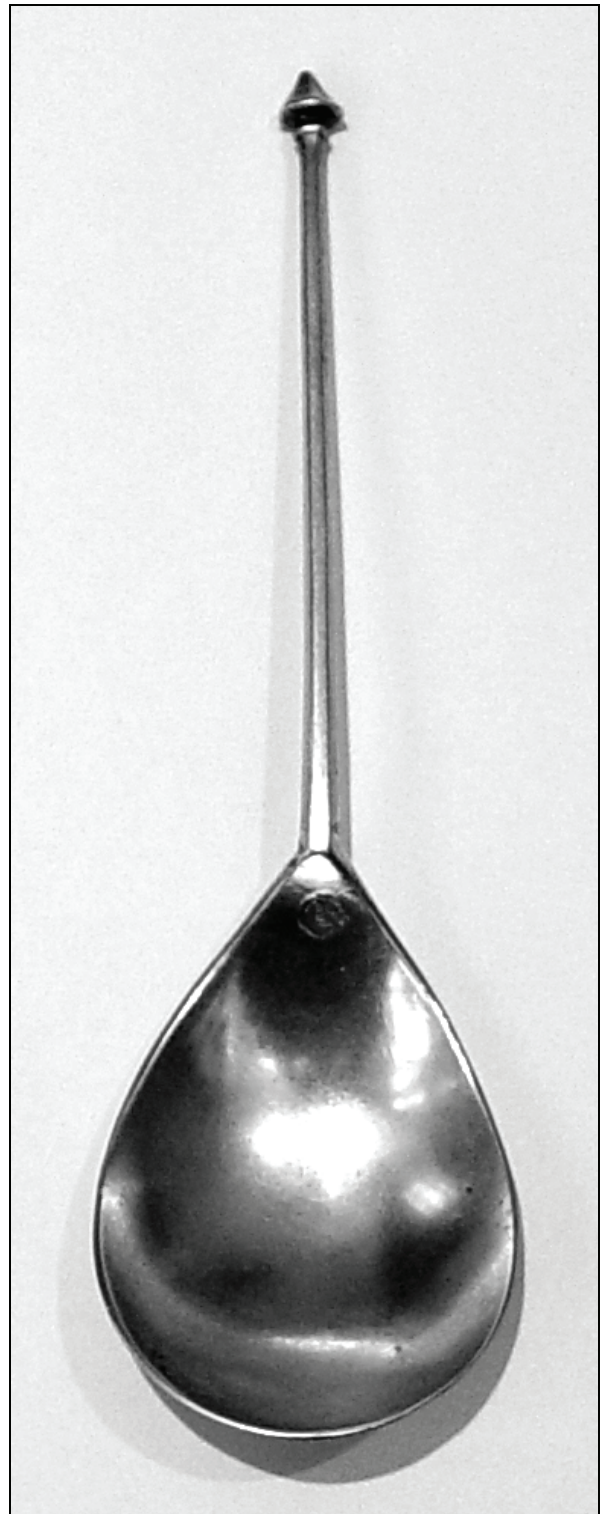
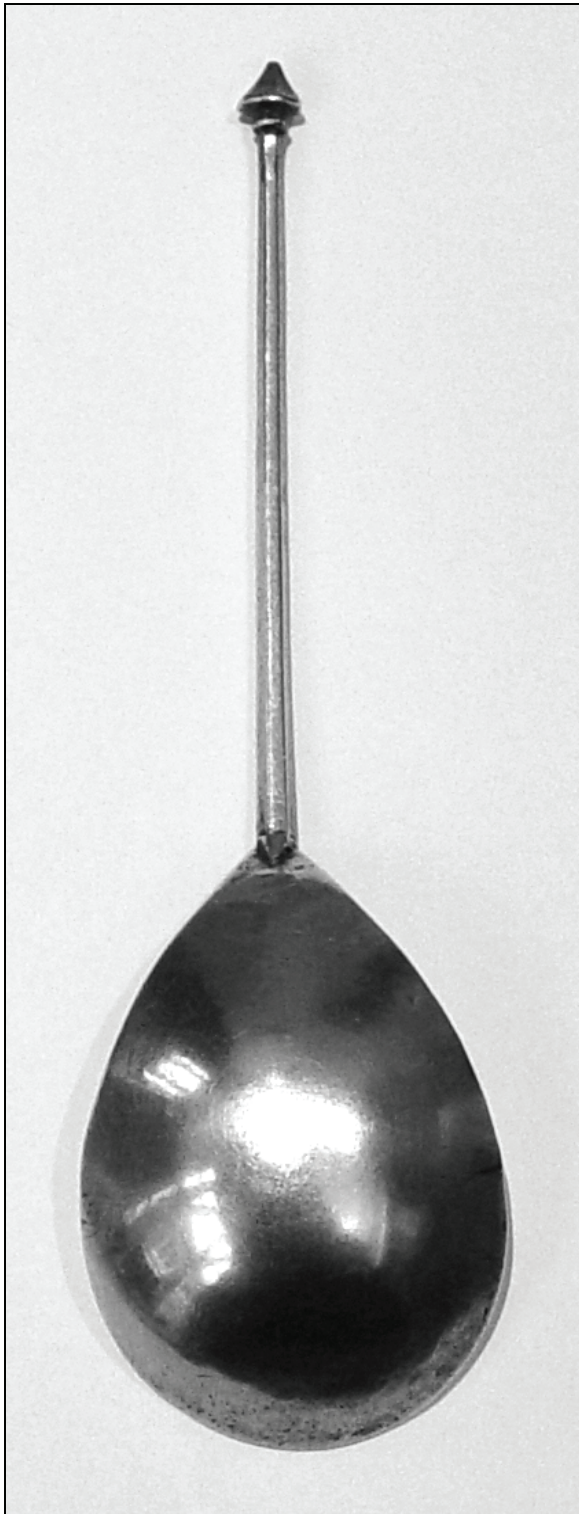


...The Finial...

ISSN 1742-156X
Where Sold £8.50

Volume 17/02
November/December 2006



-0-0-0-0-0-0-

Aberdeen Silversmith's Marks 1790-1820

An attempt at ordering those of James Erskine

By Richard Jonas

Errata and Addenda

Errata

1. Pictures:

- a) 26a & 36a are duplicates.
- b) One omitted, namely 36, JE A B D Stylised thistle (see image).



- c) In text, (Fig. 26a) should be (26b) and (Fig. 26) should be (26a).

2. Text:

- a) Under 'Additional Marks' description of 'Fist and dagger' should read 'base usually chamfered to flat bottom'.
- b) Under 'Anomalies':
 - i. line 4 should read 'Wm Fillan c.1840'.
 - ii. Last sentence should read 'in this case involving marks associated with Nathaniel Rae'.
- c) Under conclusions, end of first line and beginning of second line should read 'totally watertight. Firstly, style: it is possible etc'.

Addenda

1. 'JE/J.E, reference to 'JE' together with 'E in square punch should refer to Fig. 29.
2. Other makers, a further example of Gothic 'u' user is Peter Lambert (1804~ 1813/20), see Finial Auction 23/06/06 lot 32.

-0-0-0-0-0-0-